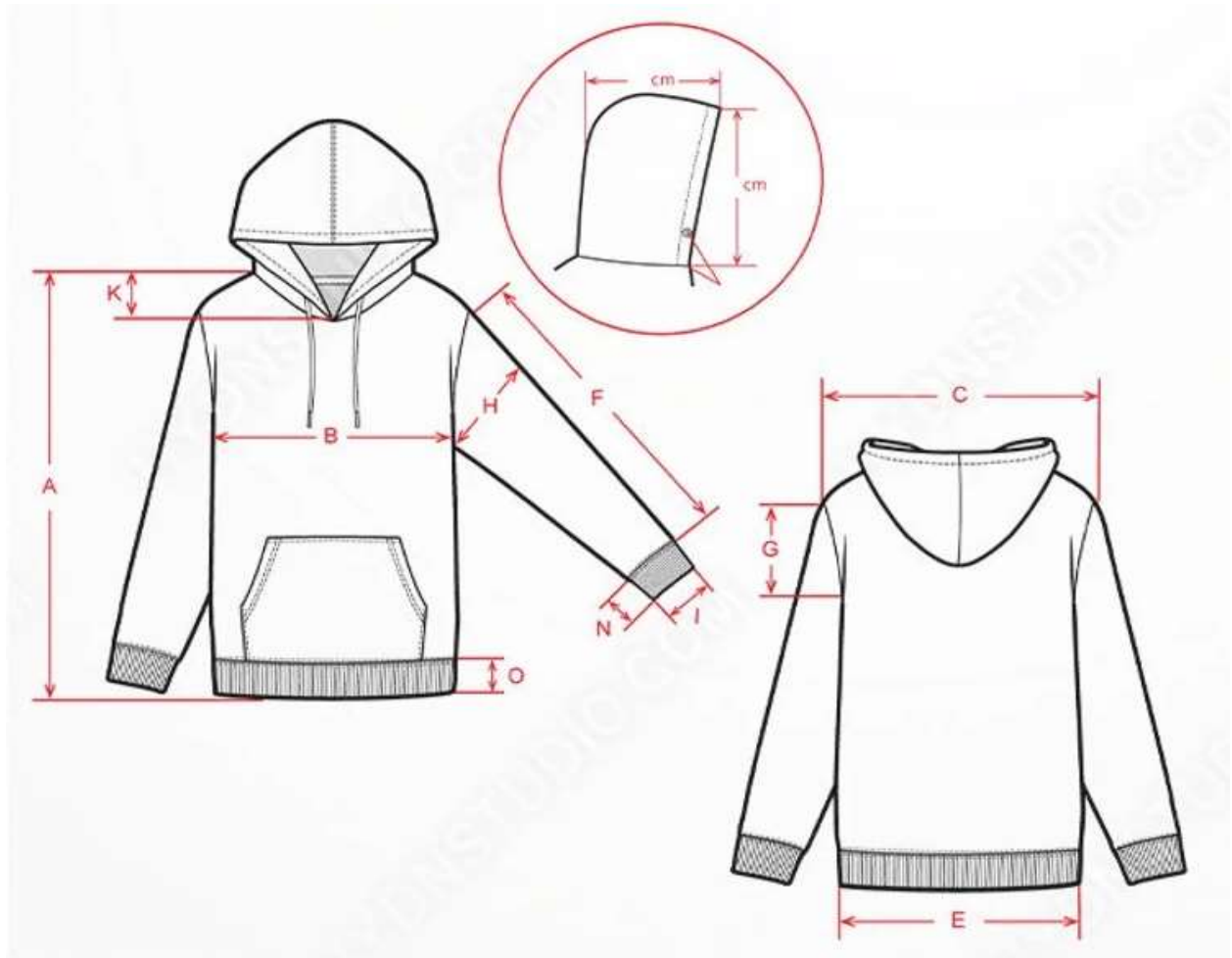


MEN / Designer: Adrian	STYLE NUMBER : BHAK 1 & 2
	DESCRIPTION: MEN'S OVERHEAD HOODIES
BRAND: WEST BISON	FABRIC QUALITY: CVC [60% COTTON /40 POLYESTER] FLEECE, 300 GSM
SIZE RANGE: M L XL XXL	AS APPROVED QUALITY



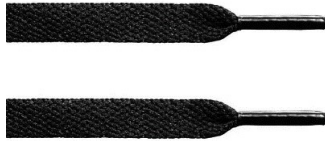
<b>MEN / Designer: Adrian</b>	STYLE NUMBER : BHAK 1 & 2
	DESCRIPTION: MEN'S OVERHEAD HOODIES
BRAND: WEST BISON	FABRIC QUALITY: CVC [60% COTTON /40 POLYESTER] FLEECE, 300 GSM
SIZE RANGE: M L XL XXL	AS APPROVED QUALITY

# FLAT DRAW CORD

# MAIN LABEL

METARIAL:

COTTON / POLY



DRAW CORD WILL DTM



LABEL FABRIC:  
COTTON POPLIN  
LABEL FABRICS COLOR  
11-0601TCX

LABEL PRINT COLOR  
18-0201TCX

# HANG TAG

FRONT

BACK



HANG TAG COLOR: 18-0201TCX

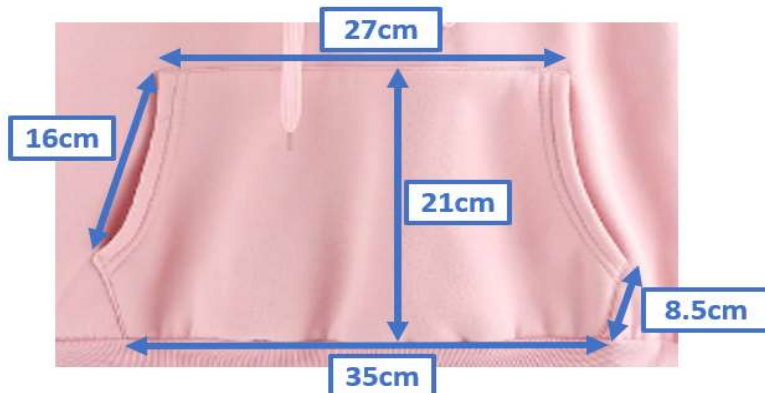


<b>MEN / Designer: Adrian</b>	STYLE NUMBER : BHAK 1 & 2
	DESCRIPTION: MEN'S OVERHEAD HOODIES
BRAND: WEST BISON	FABRIC QUALITY: CVC [60% COTTON /40 POLYESTER] FLEECE, 300 GSM
SIZE RANGE: M L XL XXL	AS APPROVED QUALITY

## MEASUREMENT

### Specification Guide

MEASUREMENT POINT	Grade	S	M	L	XL	XXL
	S - XXL					
Front Length from SNP		70.00	71.00	72.00	73.00	74.00
<b>A</b> Back length from SNP		70.00	71.00	72.00	73.00	74.00
<b>B</b> Chest width - 2cm below armhole		52.00	56.00	60.00	64.00	68.00
<b>D</b> Waist width - 18cm below armhole		50.00	54.00	58.00	62.00	66.00
<b>E</b> Hem width (flat)		42.00	46.00	50.00	54.00	58.00
<b>C</b> Across Shoulder - seam to seam		47.00	49.00	51.00	53.00	55.00
Across Front 15cm down from SNP		40.00	42.00	44.00	46.00	48.00
Across Back - 15cm down from SNP		42.00	44.00	46.00	48.00	50.00
<b>G</b> Armhole straight		24.00	26.00	27.00	29.00	31.00
<b>F</b> Sleeve length crown to cuff		67.00	68.00	69.00	70.00	71.00
<b>H</b> Bicep width -2.5cm below underarm		20.00	21.00	23.00	24.00	25.00
Elbow width at half sleeve		15.00	16.00	16.00	16.00	17.00
<b>I</b> Cuff width - long sleeve		11.00	12.00	13.00	14.00	15.00
<b>J</b> Back neck width - seam to seam		23.00	24.00	25.00	26.00	27.00
<b>L</b> Back neck drop - seam to seam		2.00	2.00	2.00	2.00	2.00
<b>K</b> Front neck drop - seam to seam		9.00	9.00	9.00	9.00	9.00
<b>O</b> Hem depth		7.00	7.00	7.00	7.00	7.00
<b>N</b> Cuff depth		7.00	7.00	7.00	7.00	7.00
Facing width at CF		4.00	4.00	4.00	4.00	4.00
<b>Pocket width at bottom</b>		<b>35.00</b>	<b>35.00</b>	<b>36.00</b>	<b>36.00</b>	<b>37.00</b>
<b>Pocket width at top</b>		<b>27.00</b>	<b>27.00</b>	<b>28.00</b>	<b>28.00</b>	<b>28.00</b>
<b>Pocket height at placket</b>		<b>15.00</b>	<b>15.00</b>	<b>16.00</b>	<b>16.00</b>	<b>17.00</b>
<b>Pocket height at side</b>		<b>8.50</b>	<b>8.50</b>	<b>8.50</b>	<b>8.50</b>	<b>9.00</b>
<b>Pocket height at pocket center</b>		<b>21.00</b>	<b>21.00</b>	<b>22.00</b>	<b>22.00</b>	<b>23.00</b>
Hood height at CF		34.00	34.00	34.00	34.00	34.00
Hood width at 15cm from top edge		25.00	25.00	25.00	25.00	25.00
Over hood length		50.00	50.00	50.00	50.00	50.00
Length of draw cord from exit point		20.00	20.00	20.00	20.00	20.00



MEN / Designer: Adrian	STYLE NUMBER : BHAK 1 & 2
	DESCRIPTION: MEN'S OVERHEAD HOODIES
BRAND: WEST BISON	FABRIC QUALITY: CVC [60% COTTON /40 POLYESTER] FLEECE, 300 GSM
SIZE RANGE: M L XL XXL	AS APPROVED QUALITY

FABRIC COLOR / PANTONE NO

CL1	11-0601TCX
CL2	BLACK
CL3	19-4024TCX
CL4	GREY MELANGE
CL5	19-0515TCX
CL6	18-1027TCX
CL7	19-3907TCX
CL8	18-0201TCX
CL9	17-4440TCX
CL10	15-4722TCX
CL11	19-1617TCX
CL12	19-4053TCX

